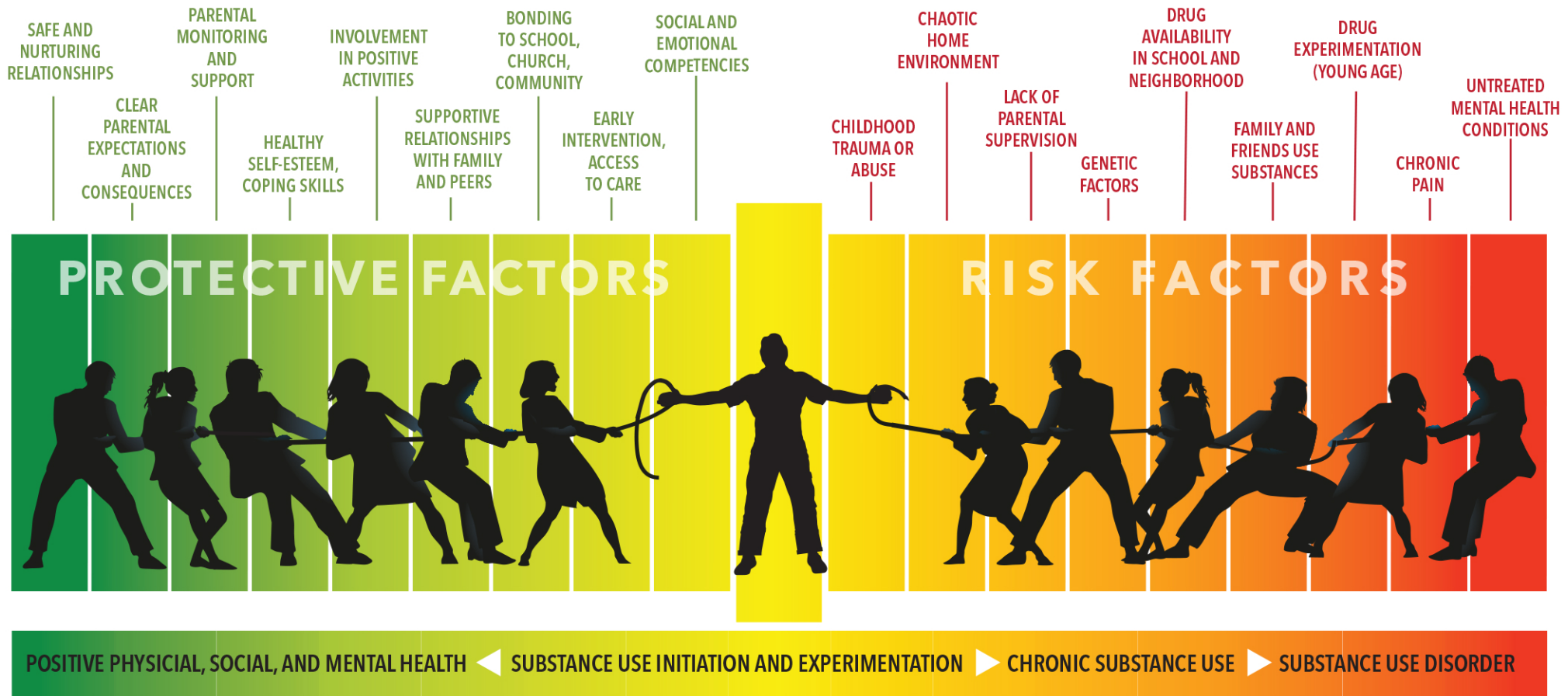


Risk and Protective Factors

Many factors influence a person's chance of developing a substance use disorder. Effective prevention focuses on **reducing those risk factors**, and **strengthening protective factors**.



Substance use disorder (SUD) is a term to describe the disease of addiction. It is a chronic, relapsing brain disease that is characterized by compulsive drug seeking and use, despite harmful consequences. SUD disrupts regions of the brain that are responsible for reward, motivation, learning, judgment and memory.

Substance use disorder (SUD) is a treatable chronic health condition from which people can and do recover.

